



OLIVE HOMES

SECTOR 98, FARIDABAD

Behtar Zindagi. Har Din

1, 2 & 3 BHK Ultimate Value Homes



OLIVE HOMES

SECTOR 98, FARIDABAD

Behetar Zindagi. Har Din



Where Every Day Feels Better

Life isn't made of grand occasions alone.
It's shaped by everyday comfort, warmth,
and the spaces that hold our routines.
Olive Homes is built on a simple belief,
a good home should elevate your life,
not just on weekends, but every single day.

Wake up to greener mornings.
Come home to brighter evenings.
Live in a community designed for
your family's growth, joy, and well-being.

WELCOME TO OLIVE HOMES

Homes that nurture your today
and empower your tomorrow.








A Place Where Life Thrives

The vision behind Olive Homes is simple, create a community where families find joy in the beauty of everyday living.

Olive Homes is a affordable premium residential community by Soha Group in Sector 98, Faridabad – thoughtfully designed to make everyday living more joyful, comfortable and connected.

With modern planning, expansive greens and a warm community environment, Olive Homes brings you a life where every day feels a little lighter, a little happier, and truly better in every sense.



An aerial photograph of a residential development. On the left side, there are several modern, multi-story apartment buildings with white facades and balconies. A swimming pool is visible near the top left. The central and right portions of the image are dominated by a dense, lush green forest. A road with a dashed white line runs vertically on the right side, with a few cars visible. At the bottom, another road with a dashed white line runs horizontally, also with a few cars. The overall scene is bright and vibrant, suggesting a well-planned and green urban environment.

*Where Thoughtful Planning
Creates Meaningful Spaces*

*A Welcoming Address
Crafted With Care*







A Home Made for Better Everyday Living

Olive Homes brings together comfortable layouts, open spaces, and day-to-day conveniences to create a community that fits real family life. With IGBC Pre-certified Silver standards and thoughtful planning, it offers an affordable way to enjoy a healthier, calmer and better everyday living experience.

8.206 Acres

Well-planned
Community Living

1,184

Thoughtfully Crafted
Apartments

1, 2 & 3 BHK

Smart layouts for
better everyday living

21

Thoughtfully designed
Residential Towers

IGBC - Precertified Silver

Certified green and
future-ready living

Wide Internal Roads

Open movement with
ample green zones

Convenience

Daily essentials within
the premises

Secure Entry

Grand Entrance with
24x7 Security

A location that connects you to everything

Strategically located in Sector 98, Faridabad, Olive Homes offers seamless connectivity to Delhi, Noida, Gurgaon, and the rapidly evolving heart of Faridabad.

Access to 60 m wide main road

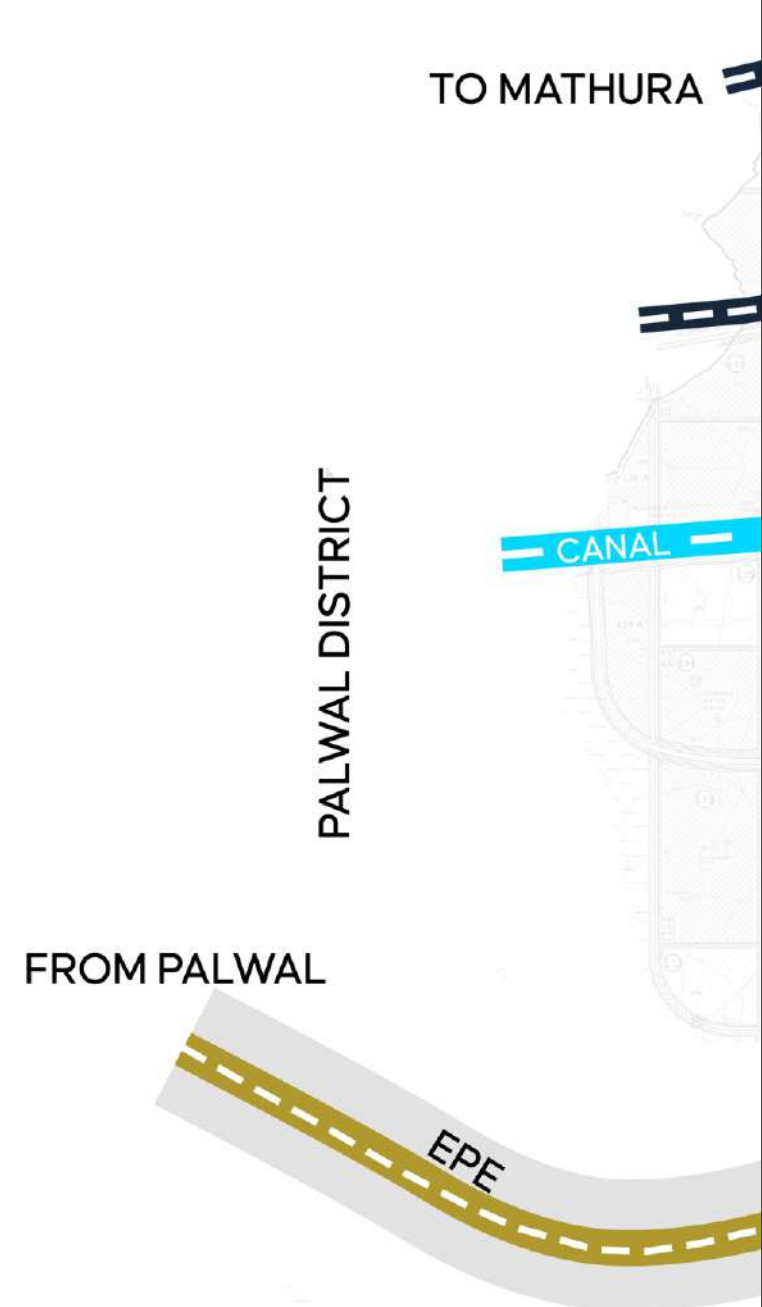
Well connected to South Delhi, Noida, Gurugram

Close proximity to upcoming Jewar airport

FNG-Faridabad Connectivity

Well-connected to schools, healthcare,
commercial hubs & office spaces

Close proximity to Delhi-Mumbai Expressway





A Well-Planned Retail Zone That Supports Your Lifestyle

With essential retail shops right inside the project, you don't need to step out for everyday needs. Groceries, services and convenience stores are planned to make life smoother and more comfortable for families.





foodworld

JEWELRY

OLIVE HOMES

BURGERS

FOOD

omoco SHOP

50% OFF



24 MTR. WIDE ROAD

24 MTR. WIDE ROAD

LIST OF AMENITIES.

- 1. ENTRY & EXIT .
- 2. COMMERCIAL PLAZA.
- 3. FLOWER BED MOUND.
- 4. REFLEXOLOGY GARDEN.
- 5. KIDS PLAY AREA.
- 6. ELDER ZONE.
- 7. OPEN GYM.
- 8. MUGA COURT.
- 9. BADMINTON COURT.
- 10. AMPHITHEATRE.
- 11. SKATING RINK.
- 12. VOLLEY BALL.
- 13. COMMUNITY GARDEN.
- 14. OPEN SEATING AND KIDS PLAY AREA.
- 15. WALKING TRACK.
- 16. YOGA GARDEN.
- 17. PET PARK.
- 18. TREE COURT.
- 19. TOWER DROP OFF.

2BHK TOWER (T-01 TO T-08)

2BHK TOWER (T-09 TO T-14)

3BHK TOWER (T-15 TO T-20)

1BHK TOWER (T-21)

OLIVE HOMES: SITE PLAN



COMMERCIAL

COMMUNITY

60 MTR. WIDE ROAD

A home that brings your aspirations to life

A thoughtfully layered landscape where families thrive together.
The masterplan of Olive Homes reflects a community-first design philosophy.



Green courts at the heart of each residential cluster



Multiple play zones for children



Walking & jogging loops



Open-air fitness areas



Courts for badminton & other sports



Community lawns, gazebos & seating zones



Social spaces



Commercial retail shops for daily needs



Grand Entrance with 24x7 Security



*Spaces that bring joy
to everyday living*

AMENITIES

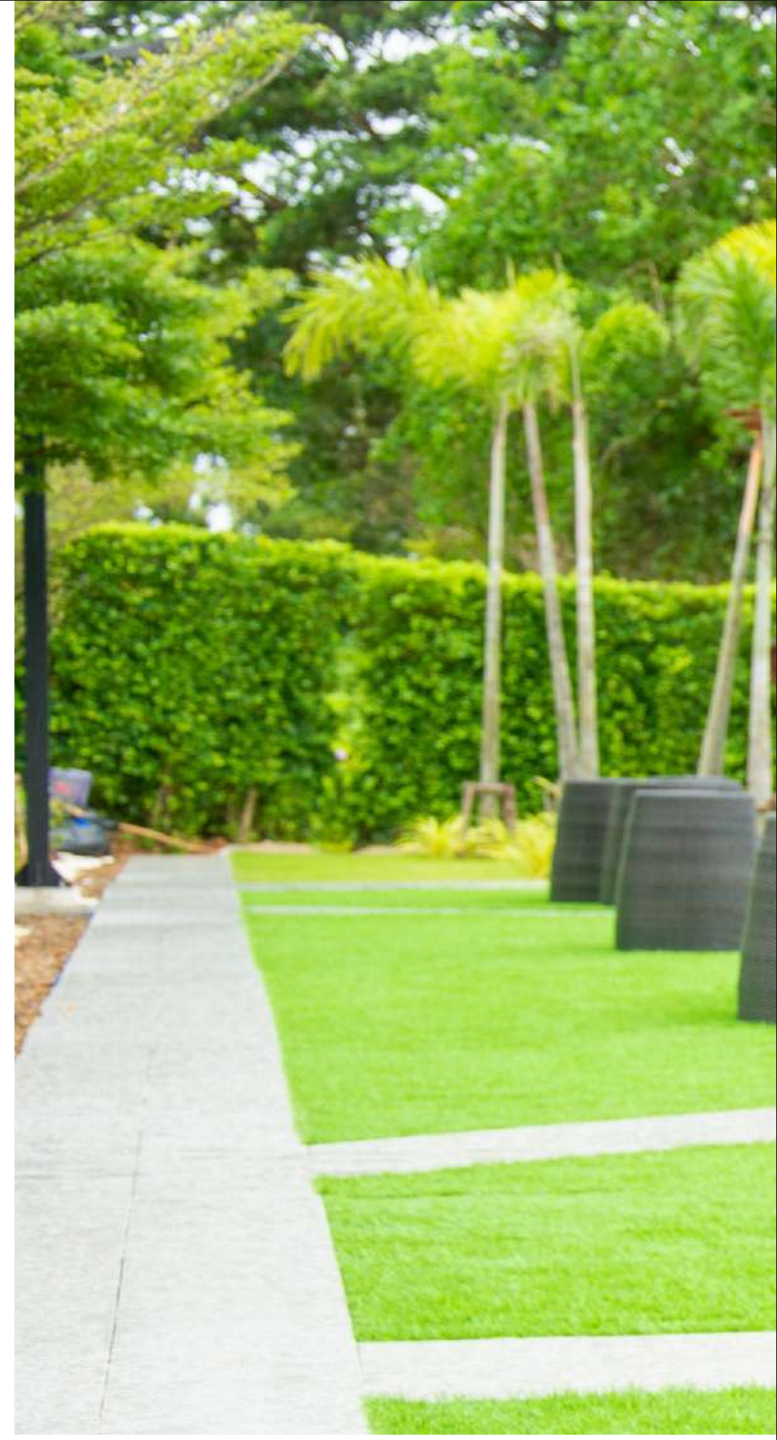
Recreational & Wellness

Outdoor gym & fitness stations

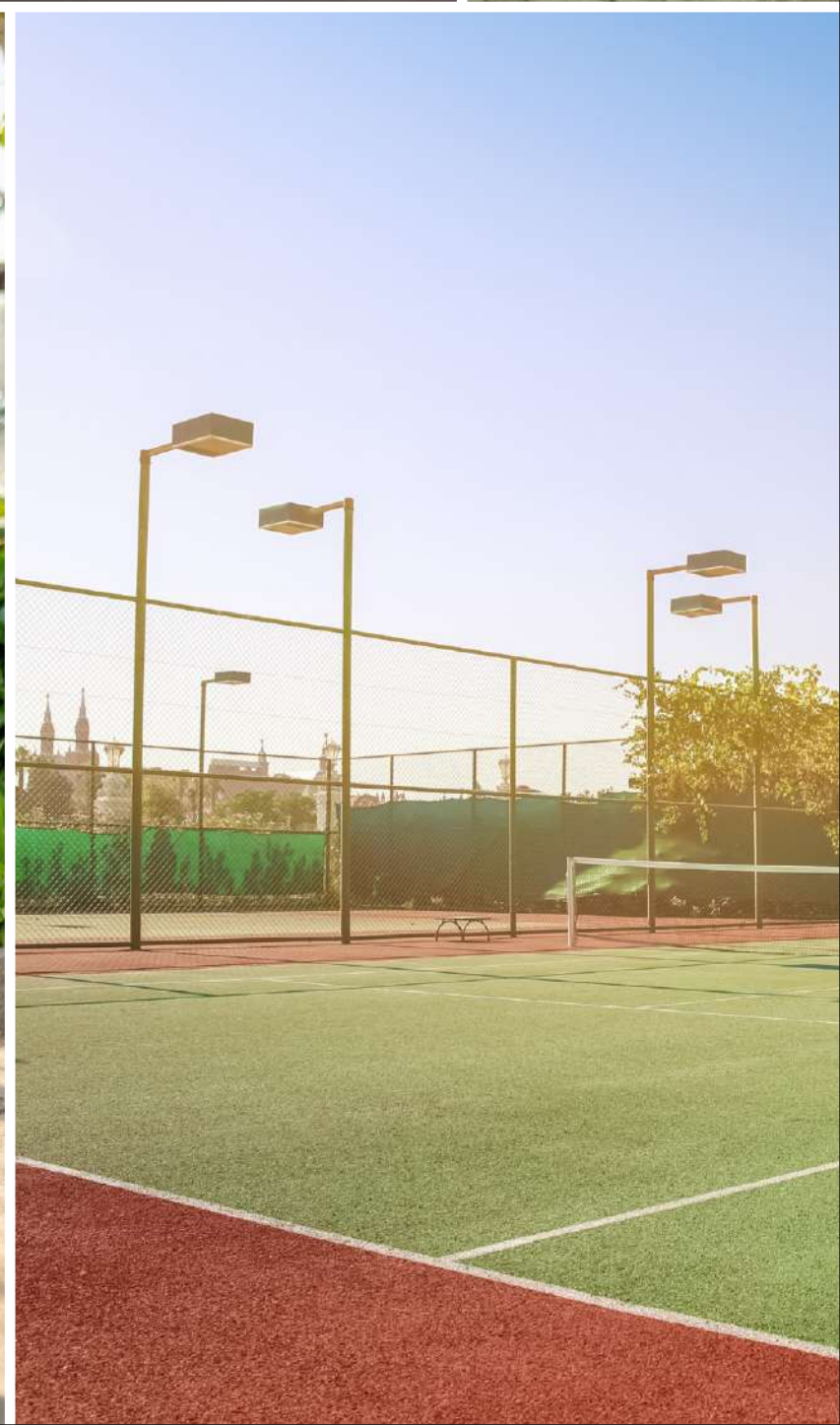
Jogging/walking track

Yoga & meditation zones

Open Seating Area







*Stock image for reference only



Play & Activity

Kids' play area

Sports court (badminton/multi-court)

Walking Tracks



*Stock image for reference only



Green & Open Spaces

Central landscaped greens

Gazebos & sit-out plazas

Fragrance garden

Butterfly garden

Community lawns & shaded seating





Convenience & Lifestyle

Creche / community center

Internal commercial block

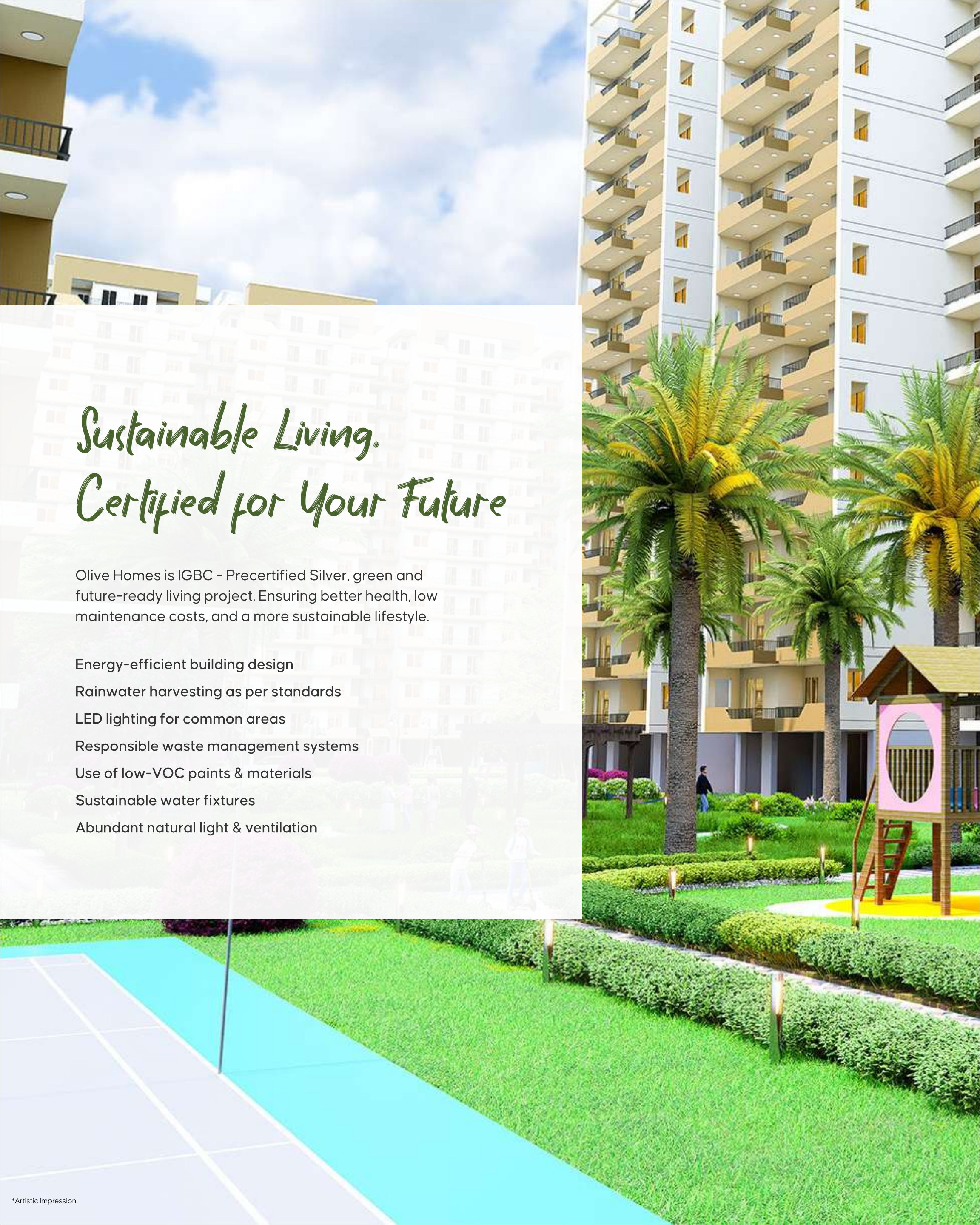
24x7 security & CCTV surveillance

Ample parking space



*Artistic Impression





Sustainable Living, Certified for Your Future

Olive Homes is IGBC - Precertified Silver, green and future-ready living project. Ensuring better health, low maintenance costs, and a more sustainable lifestyle.

Energy-efficient building design

Rainwater harvesting as per standards

LED lighting for common areas

Responsible waste management systems

Use of low-VOC paints & materials

Sustainable water fixtures

Abundant natural light & ventilation







Smartly Planned Towers for Maximum Comfort

21 towers thoughtfully spaced for light & air

Efficient layouts ensuring privacy

Earthquake-resistant structure

High-speed elevators

Well-planned service areas & fire safety measures

Ventilated corridors and lift lobbies



*Spaces that bring joy
to everyday living*

UNIT PLANS



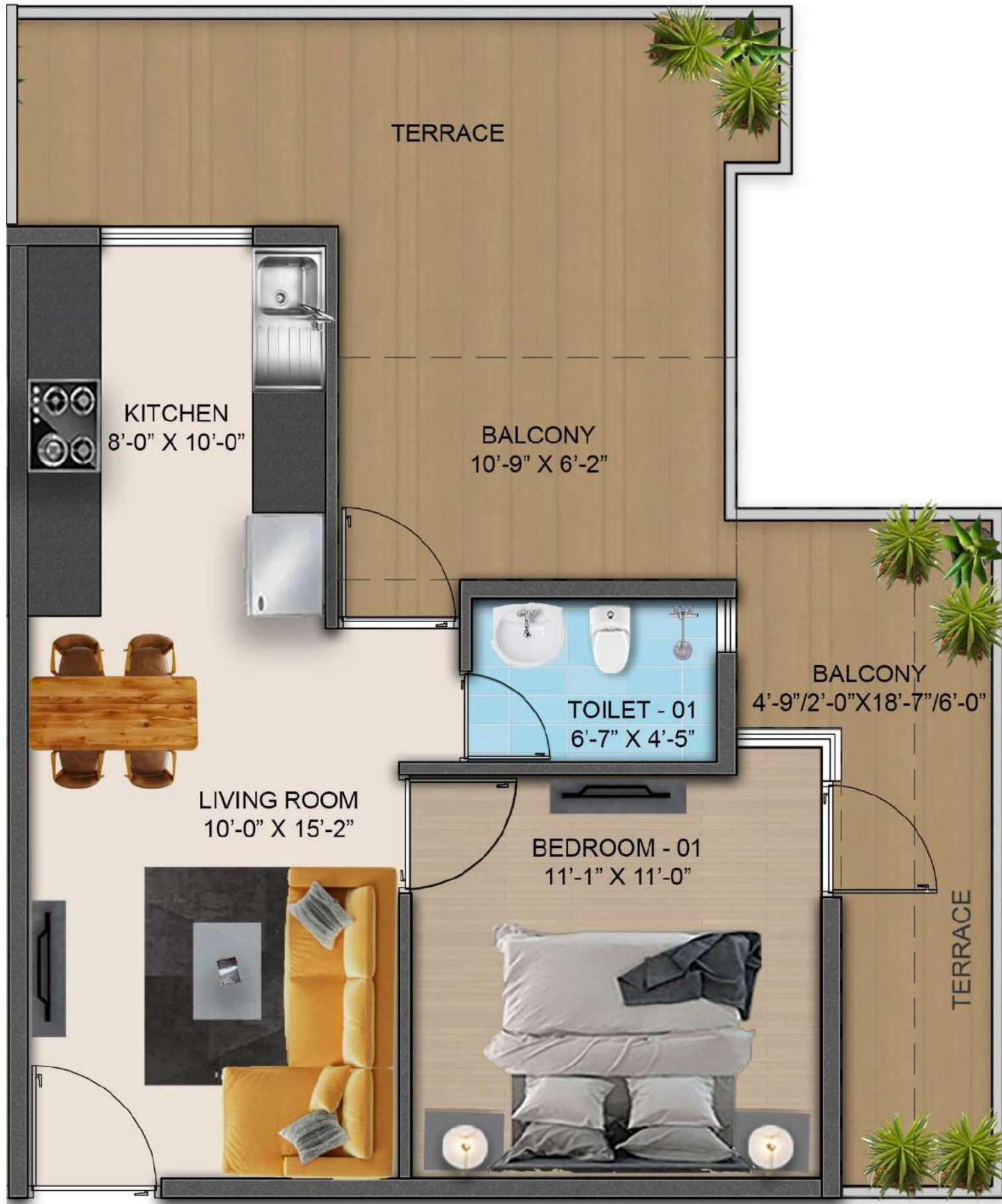
UNIT PLAN - 1BHK (TYPE - A)

Carpet Area - 398.27 Sq.Ft. | Balcony Area -117.55 Sq.Ft



UNIT PLAN - 1BHK (TYPE-B)

Carpet Area - 398.27 Sq.Ft. | Balcony Area -117.55 Sq.Ft



UNIT PLAN - 1BHK (TYPE - A)

Carpet Area - 403.46 Sq.Ft. | Balcony Area - 167.49 Sq.Ft



UNIT PLAN - 1BHK (TYPE - B)

Carpet Area - 407.63 Sq.Ft. | Balcony Area - 66.74 Sq.Ft



UNIT PLAN - 1BHK (TYPE - A)

Carpet Area - 401.09 Sq.Ft. | Balcony Area - 45.32 Sq.Ft



UNIT PLAN - 2BHK (TYPE-B)

Carpet Area - 573.63 Sq.Ft. | Balcony Area - 136.28 Sq.Ft



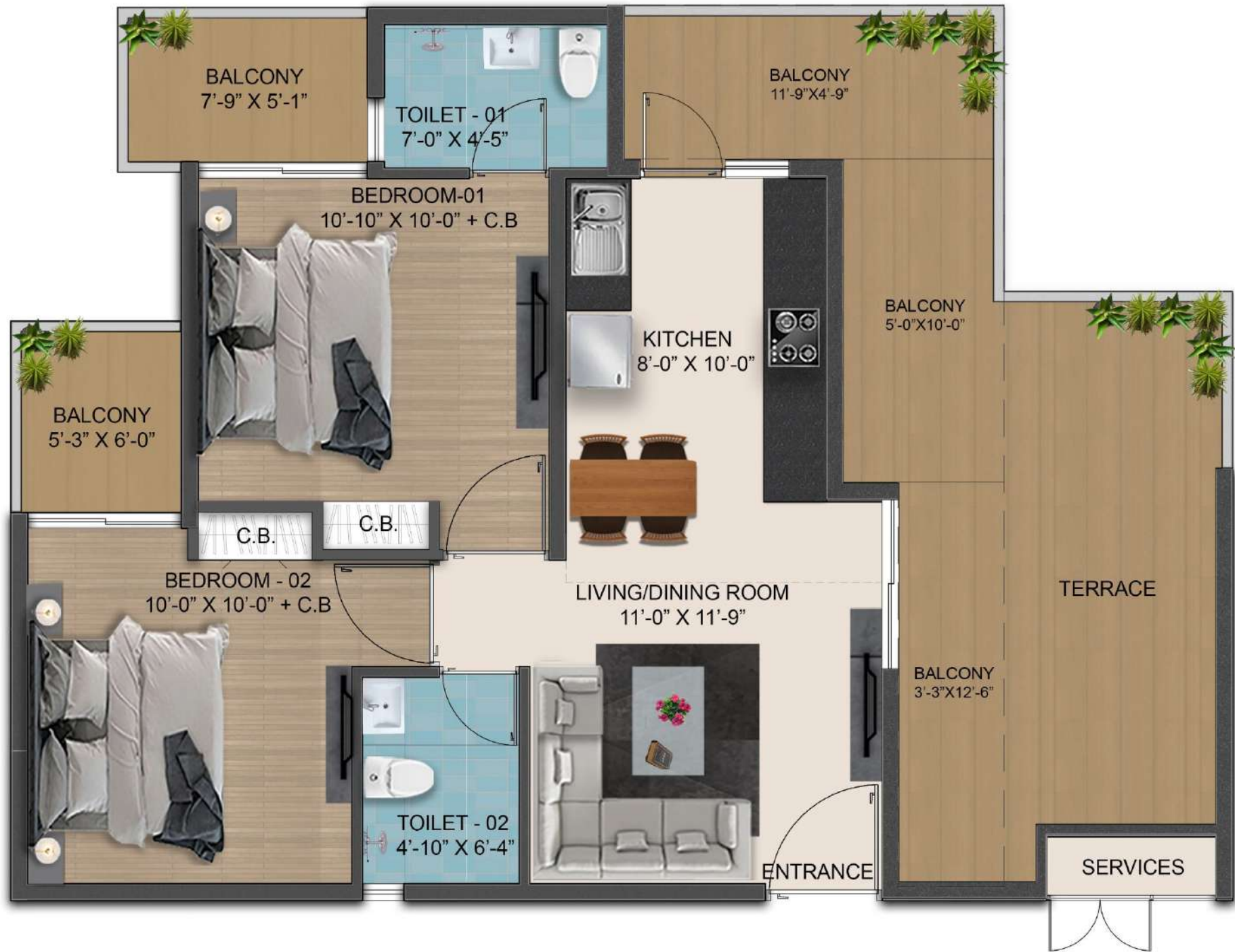
UNIT PLAN - 2BHK (TYPE - A)

Carpet Area - 556.31 Sq.Ft. | Balcony Area - 160.17 Sq.Ft



UNIT PLAN - 2BHK(14th Floor)

Carpet Area - 532.54 Sq.Ft. | Balcony Area - 214.74 Sq.Ft



UNIT PLAN - 2BHK (TYPE - A)

Carpet Area - 573.29 Sq.Ft. | Balcony Area - 202.58 Sq.Ft



UNIT PLAN - 3BHK

Carpet Area - 644.99 Sq.Ft. | Balcony Area - 215.28 Sq.Ft





SPECIFICATIONS



FLOORING

- Vitrified tiles / IPS / ceramic tiles
-



WALLS & PAINT

- Colour wash / OBD / dry distemper
-



SANITARY & CP FITTINGS

- Standard fittings from Cera (ISI marked)
-



DOORS & WINDOWS

- Flush doors with MS/hollow section frames
 - Saint-Gobain/Asahi glass where applicable
-



ELECTRICAL

- ISI marked wiring
-



KITCHEN

- Granite/marble countertop
 - SS sink
 - 2-ft wall tiles
-



ABOUT SOHA GROUP

Soha Group is a forward-thinking real estate company committed to shaping communities built on trust, quality, and lasting value. With a decade-long presence and a development pipeline spanning over 5.6 million sq. ft., Soha has established itself as a dependable name across Faridabad and emerging growth corridors of NCR.

From plotted townships to integrated group housing and commercial destinations, every Soha project carries a clear promise – thoughtfully designed spaces that enrich everyday living and create long-term prosperity for families.

BUILDING VALUE FOR YOUR WORLD

At the heart of Soha's philosophy is a simple yet meaningful promise: to build value that stays with you, your family, and your future.

For Soha, value is not just measured in square feet—it's measured in comfort, trust, and the confidence that what you own today will support the life you aspire to tomorrow.

This purpose guides every detail, from planning and sustainability to customer experience and timely delivery.

With a debt-free foundation, a people-first approach, and a commitment to long-term wellbeing, Soha Group continues to shape communities where better living becomes an everyday reality.



DELIEVRED AND ONGOING PROJECTS BY SOHA GROUP



Neal City

Status: Delivered
Type: Residential Plotted Colony under DDJAY
Location: Sector 98, Faridabad
Size: 13.58 acres



Wonder Walk

Status: Ongoing
Type: Commercial Complex, Built-up SCOs/Floors
Location: Sector 88, Faridabad
Size: 7.3 acres



Olive Town

Status: Ongoing
Type: Residential Plotted Colony under DDJAY
Location: Sector 98, Faridabad
Size: 11.25 acres



Arconia City

Status: RERA Received
Type: Residential Plotted Colony
Location: Sonipat

PROPOSED PROJECTS BY SOHA GROUP

Neal City 2

Status: Proposed Expansion
Type: Large plotted township
Location: Near Sector 98, Faridabad

Olive Town 2

Status: Proposed Expansion
Type: Expanded plotted development
Location: Near Olive Town, Sector 98



Corporate Office: B-27, Ground Floor, Vipul Plaza, Sec 81, Faridabad 121002

Registered Office: HS-16, Kailash Colony, South Delhi, New Delhi-110048 | sohagroup.in | care@sohagroup.in | +91 85-85-85-6616

Olive Homes Address: Village Bhupani & Nachauli, Sector-98, Faridabad, Haryana | HRERA-PKL-FBD-705-2025, DT: 27.05.2025

Promoter urges every applicant to inspect the Olive Homes project site at Village Bhupani and Nachauli, Sector-98, Faridabad, Haryana, and shall not merely rely upon any architectural impression, plan, or sales brochure and, therefore, requests to make personal judgment prior to submitting an application for allotment. Unless otherwise stated, all the images, visuals, materials, and information contained herein are purely creative/artistic and may not be actual representations of the product and/or any amenities. Further, the actual design may vary in the fit and finished form, from the one displayed above. Journey time shown, if any, is based upon Google Maps, which may vary as per the traffic at a relevant point of time, if applicable. All approvals and regulatory details, including HRERA No. HRERA-PKL-FBD-705-2025, are current but subject to change and update. T & C Apply. 1sq. mt. = 10.7639 sq. ft.